

PELLUCE INSTALLATION

IMPORTANT SAFETY INSTRUCTION

Read this installation guide prior to attempting installation. Always turn OFF the main power before starting your installation. Consult a qualified electrician before installation. Installation should be carried out by a qualified electrician.

During installation, basic safety precautions should always be followed, including the following listed.

1. Do not install the lighting system in a wet location.
2. Ensure the appropriate connectors match the luminaire fixture
3. Do not install any part of the luminaire less than 5 feet above the floor.
4. Do not install any luminaire assembly closer than 5 inches from any window treatments, i.e., curtain, blinds or any similar combustible type material.
5. Do not attempt to energize anything other than the luminaire fixtures.
6. To reduce the risk of fire and electric shock, do not attempt to connect to power tools, extension cords, appliances, or the like, to the track.
7. Maintenance of the luminaires should be performed by person(s) familiar with the luminaires construction and any hazards involved. regular fixture maintenance programs are recommended.
8. Do not exceed the nominal supply voltage or amperage ratings.
9. Turn the power OFF at the fuse or circuit breaker box before doing any installation or maintenance activities.
10. Wear rubber soled shoes and work on a sturdy wooden or non-conductive ladder.
11. The lighting product must be mounted in locations and at heights in compliance with the National Electrical Code and with local building codes. Installing contrary to instruction may cause unsafe conditions.
12. To avoid hazards to children, take accountability for all parts and dispose all packing materials properly.
13. It may be necessary to clean the refractor / lens. Frequency of cleaning will depend on ambient dirt level and minimum light output which is acceptable to the user. Refractor / lens should be washed in a solution of warm water and any mild, non-abrasive household detergent, rinsed with clean water and wiped dry. Should optical assembly become dirty on the inside, wipe refractor / lens and clean in above manner, replacing damaged gaskets as necessary.
14. Call the Technical Support department about any installation questions.
15. Do not install a damaged product. This luminaire has been properly packed so that no parts should have been damaged during transit. Inspect to confirm. Any part damaged or broken during or after assembly should be replaced.
16. These instructions do no purpose to cover all details or variations in equipment nor to provide every possible contingency to meet in connection with installation, operation or maintenance. Should further information be desired or particular problems arise, not covered sufficiently for the purchaser's or owner's purposes, please contact the Technical Team.



CAUTION

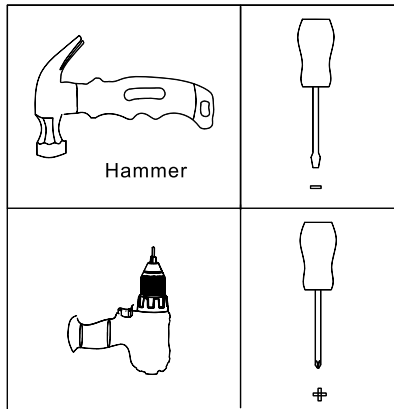
This equipment is intended to be installed only by qualified personnel. The installation must be made in accordance with the current edition of the National Electrical Code (NEC) and all applicable state and local building codes. The final installation must be approved by the appropriate, qualified electrical / building inspector(s). Improper installation may result in a fire or electrical hazard. Ensure the electrical power to the circuit has been disconnected before installing the electrical system.



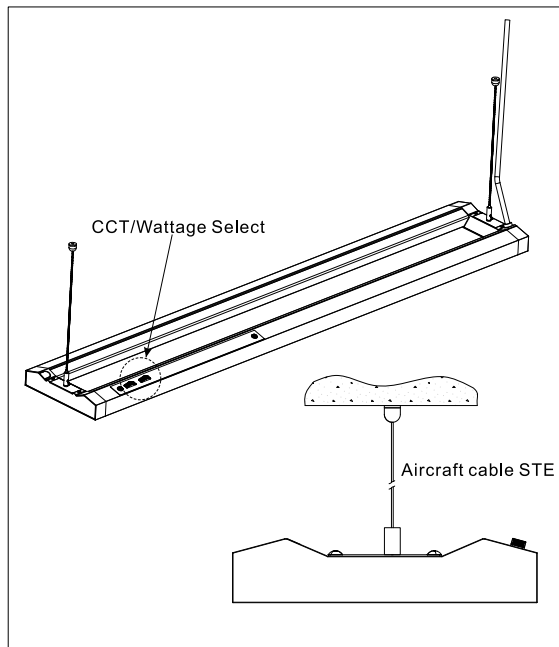
WARNING

- Risk of fire. Most dwellings built before 1985 have supply wire rated at 60°C.
- Consult a qualified electrician before installation.
- Properly ground electrical enclosure.
- To prevent wiring damage or abrasion, do not expose wiring to edges of sheet metal or other sharp objects.
- Use only UL approved wire input/output connections. Minimum size 18 AWG or 14AWG if there are any continuous runs.
- If the fixtures are connected in a continuous run, do not exceed allowable number of fixtures in series/power in continuous runs.
- Inrush currents must be taken in account by the electricians to account for proper circuit design.

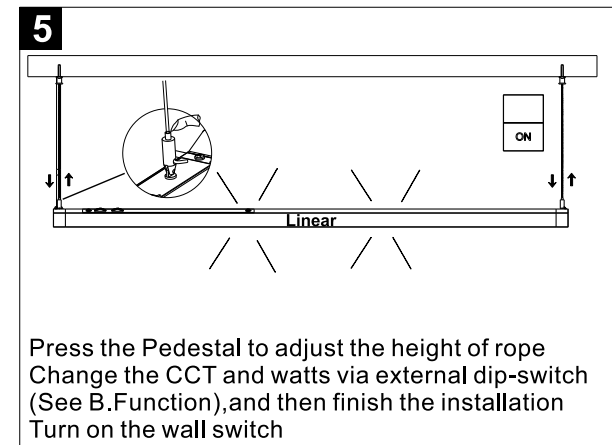
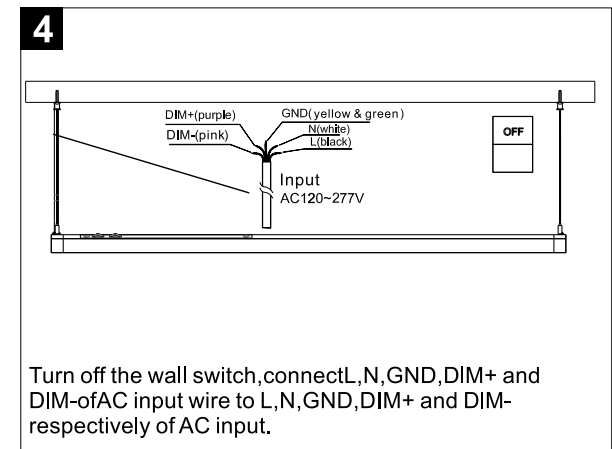
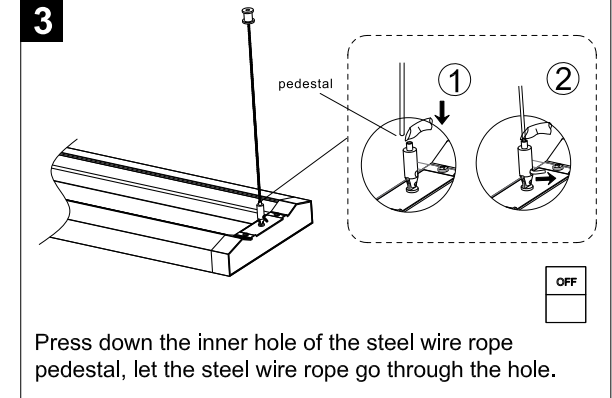
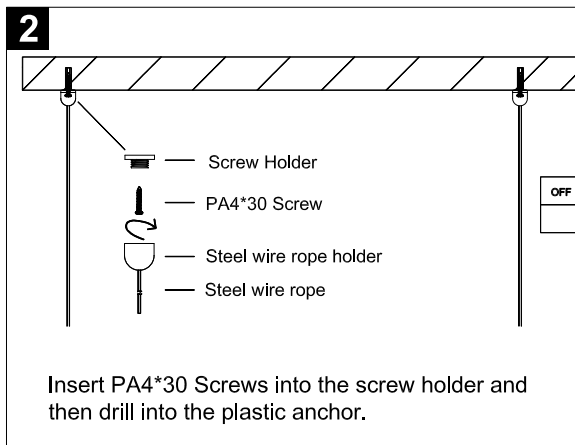
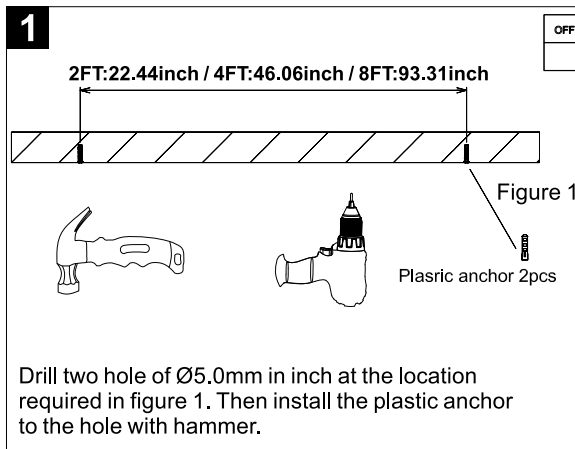
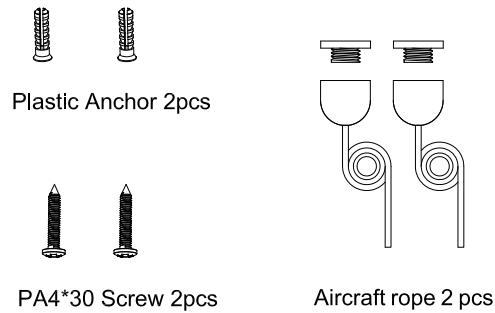
TOOL



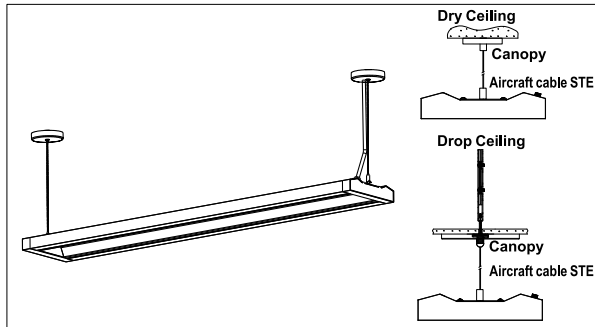
A1) .Rope Suspension Installation



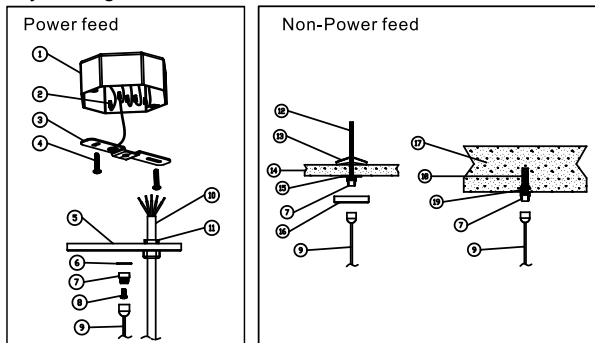
Installation Kits



A2) .Canopy Suspension Installation

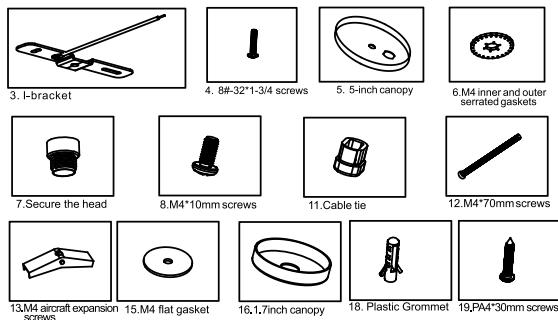


Dry Ceiling installation

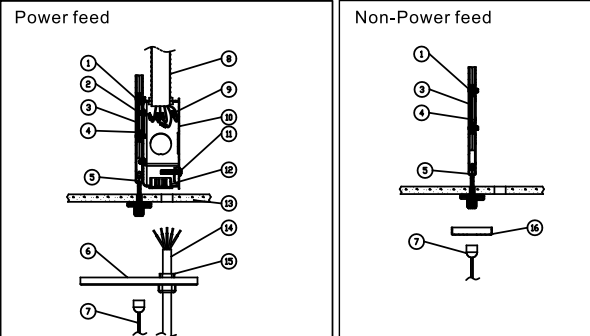


liste

1. Junction box (other provided);
2. Wire Nut (other provided);
3. 1-bracket x1PCS
4. 8#-32*1-3/4 screws x4PCS
5. 5-inch canopy x2PCS
6. M4 inner and outer serrated gaskets x1PCS
7. Secure the head x2PCS
8. M4*10mm screws x2PCS
9. Aircraft cable (other provided)
10. AC power cord (other provided)
11. Cable tie x1PCS
12. M4*70mm screws x2PCS
13. M4 aircraft expansion screws x2PCS
14. Drywall Ceiling (other provided)
15. M4 flat gasket x2PCS
16. 1.7inch canopy x1PCS
17. Solid Ceiling (other provided)
18. Plastic Grommet x4PCS
19. PA4*30mm screws x4PCS

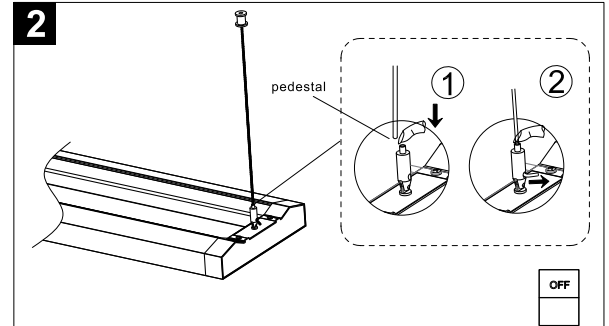
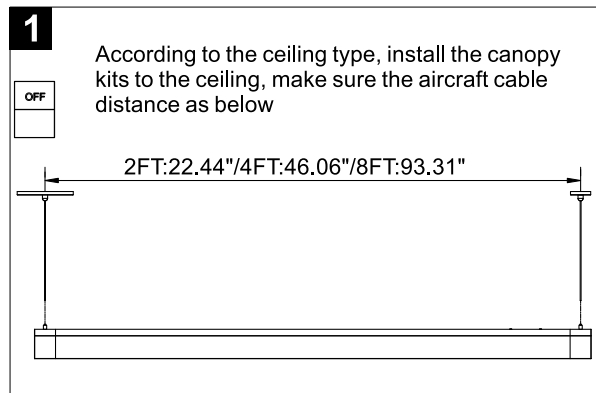
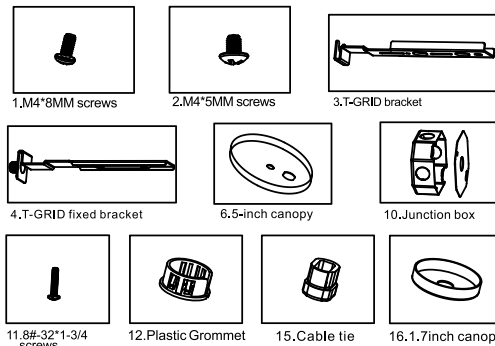


Drop Ceiling installation

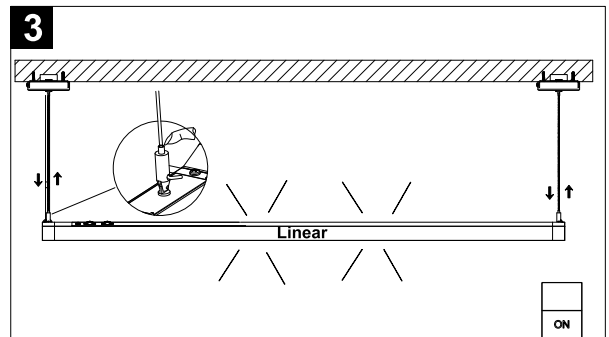


list

1. M4*8MM screws x4PCS
2. M4*5MM screws x2PCS
3. T-GRID bracket x2PCS
4. T-GRID fixed bracket x2PCS
5. T-GRID (other provided)
6. 5-inch canopy x2PCS
7. Aircraft cable (other provided)
8. Armored Cable & Connector (other provided)
9. Wire Nut (other provided)
10. Junction box x1PCS
11. 8#-32*1-3/4 screws x6PCS
12. Plastic Grommet x1PCS
13. Ceiling Tile (other provided)
14. AC power cord (other provided)
15. Cable tie x2PCS
16. 1.7inch canopy x1PCS



Press down the inner hole of the steel wire rope pedestal, let the steel wire rope go through the hole.



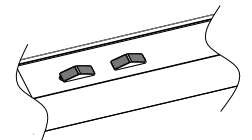
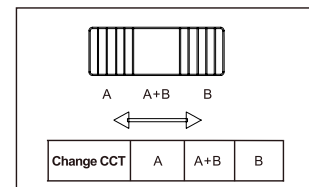
Press the Pedestal to adjust the height of rope
Change the CCT and watts via external dip-switch
(See B.Function),and then finish the installation.

B. Function

3-Watts select

Pattern	2FT	4FT	8FT
Low Lumen	15W	30W	60W
Medium Lumen	20W	40W	80W
High Lumen	25W	50W	100W

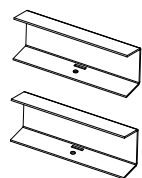
3-CCT select



Note: Synchronously set the DIP switches at both ends for 8ft model.

C. Linkable Installation

Linkable kits

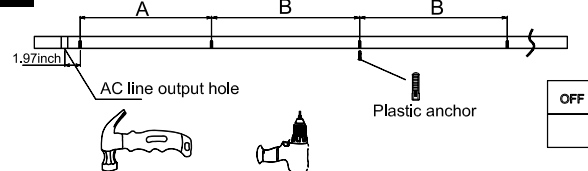


Linkable bracket 2pcs

Dust plate 1pcs

Dust plug A 1pcs

1

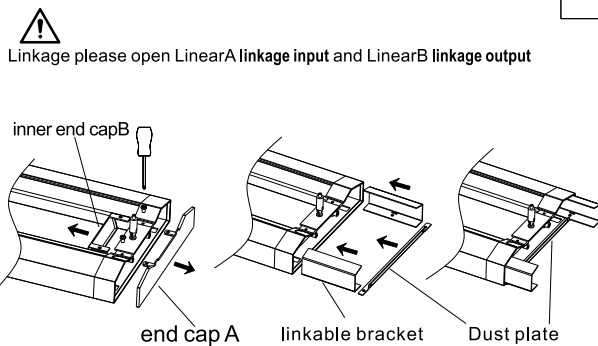


No.	Size	A	B
1	2FT	22.44inch	23.62inch
2	4FT	46.06inch	47.24inch
3	8FT	93.31inch	94.49inch

Measure the ceiling , make down the position for each linear fixtures.The max linkable quantity for one power feed: 2FT&4FT ≤ 7pcs, 8FT≤4pcs

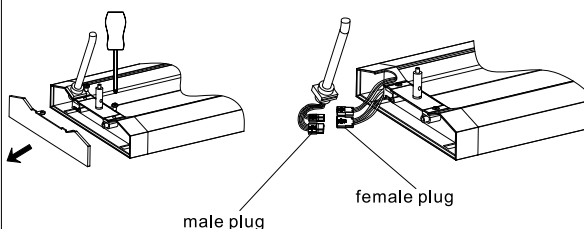
2

Remove one end cap, insert the linkable bracket into the linearA,and insert the dust plate take out theinsidelinkable wire.

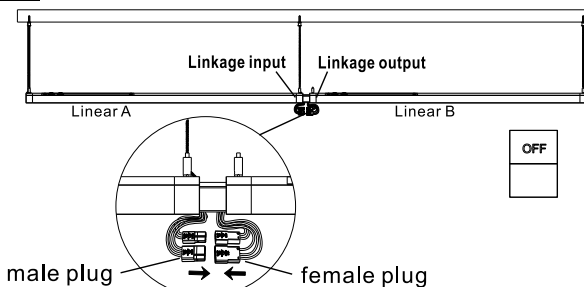


3

Follow the step 2-3,at page 2 Install Linear A,then connect AC line Remove the input wire of the next fixture

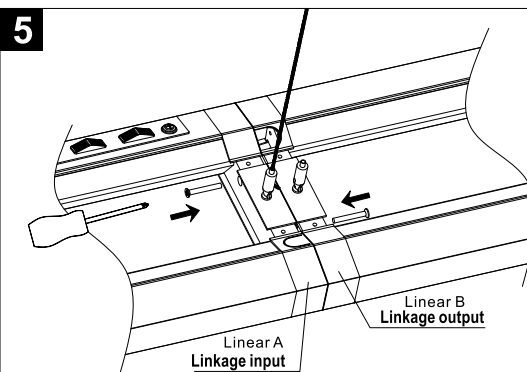


4



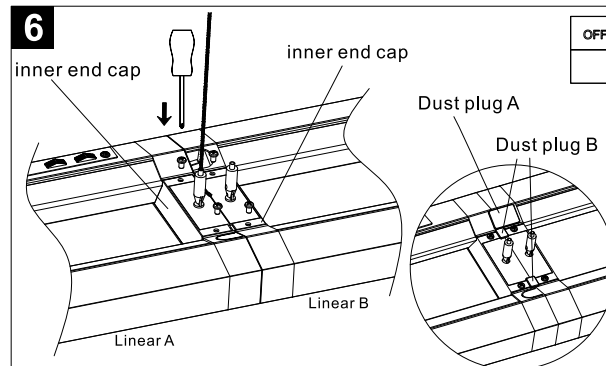
Connect the male plug of Linear A and female plug of Linear B ,insert the linkable bracket to the Linear B make them seamless linkable together.

5



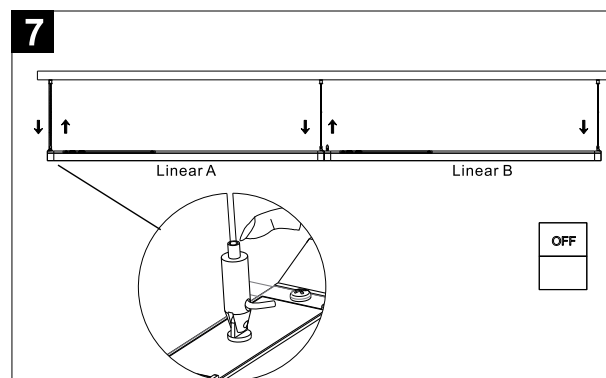
Check the status after linked make sure no any gap between two linears , and fix with screws .

6



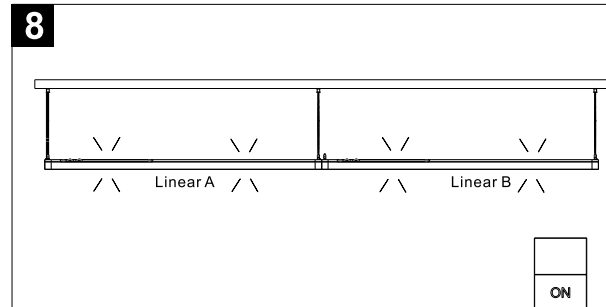
Install the inner end cap and fix with 2 screws on the top, and install the dust plug A&B

7



Press the pedestal to adjust the height of rope to make sure the fixtures in a line , keep balance.

8



Change the CCT and watts via external dip-switch (See B . Function),and then finish the installation.