



# FLUME

## Suspended Architectural Luminaire

### DESCRIPTION

The Flume redefines indoor linear lighting with its distinctive design and outstanding optical performance. With various lumen packages and distributions, it offers versatility for diverse lighting needs. As an affordable yet artistic centerpiece, the Flume is ideal for enhancing any commercial space. Available in 4ft and 8ft lengths.

### APPLICATION

Ideal for indoor spaces such as offices, retail areas, lobbies, conference rooms, and other modern settings, this fixture combines exceptional performance with an elegant touch to enhance any atmosphere.

### LENGTHS

Available in 4ft and 8ft, linkable. Additional lengths are available please consult factory, all lengths are nominal and do not include end caps.

### FEATURES

-Standard 3 CCT Selectable option 3000K/3500K/4000K or 3000K/4000K/5000K

- CRI 90+
- 0-10V Dimming standard.
- Additional control types are available (DALI & Lutron) at an additional cost.

### OPTICS

Advanced diffuse reflector shapes downlight distribution, while wide batwing uplight ensures ceiling uniformity and room fill.

### CONSTRUCTION

- Precision cut housing extruded from 6063 aluminum.
- Die-casting end-caps ensure a robust and clean construction.
- Operating temperature range: -25° C to 50° C.

### FINISH

Powder coated white, black or silver are standard. Custom RAL colors Available.

### MOUNTING

Available mounting types include Suspension Aircraft Kit (Type C), Drop Ceiling Suspension Mount, Drywall Suspension Mount Kit, Canopy Pendant, Drywall Pendant Mount, and Drop Ceiling Pendant Mount.

### WEIGHT

4ft (9.26 lbs) , 8ft (17.26lbs)

### Warranty

5 year warranty stadard, Optional 10 year warranty available upon request.

### LISTINGS/COMPLIANCE

- ETL - Listed for damp location.

\*IES Files available upon request or visit [vivid-forms.com](http://vivid-forms.com)

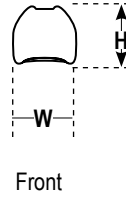
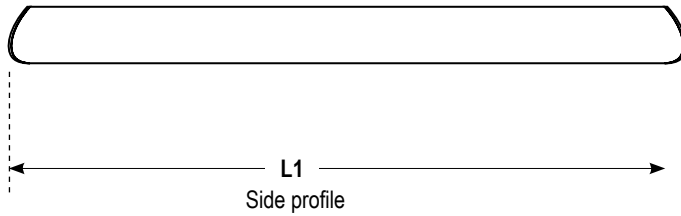
## ORDERING INFORMATION

Series	Length/Output	Voltage	Color temperature	Dimming	Lens	Finish	Mounting	Canopy Type	Canopy Finish	Accessories

Series	Length/Output	Voltage	Color temperature	Dimming	Lens	Finish	Mounting
FL Flume	4 - 4ft, (30W/40W/50W) 8 - 8ft, (60W/80W/100W)	UNV - 120-277V HV - 120-347V	3CCTA - 30K/30K/40K RGB - RGB RGBW - RGBW D - Tunable White	DM - 0-10V Dimming DA - DALI L - Lutron	HPL - Hex Louver	WH - White BK - Black SA - Silver CC - Custom Color	STC - Suspension Aircraft Kit (Type C) SCS - Drop Ceiling Suspension Mount SDS - Drywall Suspension Mount Kit CP - Canopy Pendant DPM - Drywall Pendant Mount CPM - Drop Ceiling Pendant Mount

Canopy Type	Canopy Finish	Accessories
SCKA - 5" Canopy	BC - Black	EM - Emergency Battery
SCKB - 9/16 Dropceiling 5" Slim Canopy	WC - White	MS - Microwave Sensor
SDS - Drywall Suspension Mount Kit	SC - Silver	PIR - Infrared Sensor
		EMMS - Emergency Battery with Microwave Sensor
		EMPIR - Emergency Battery with Infrared Sensor

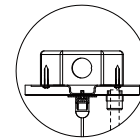
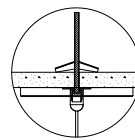
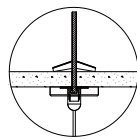
## DIMENSION



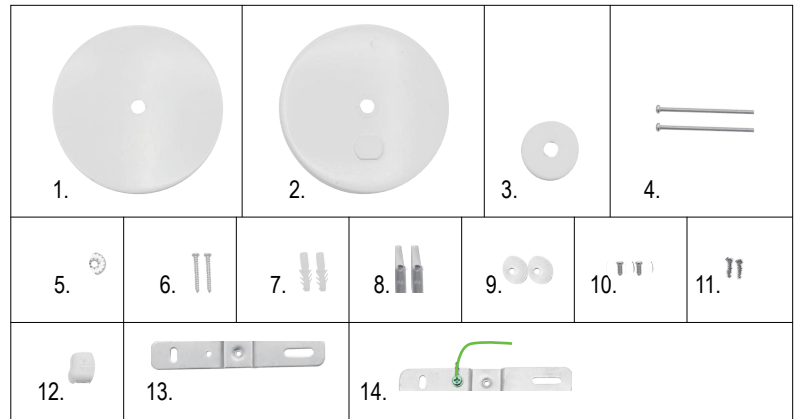
Size	L1 Length	W=Width	H=Height
4'	46.69"	4.45"	3.94"
8'	90.90"		

## MOUNTING OPTIONS

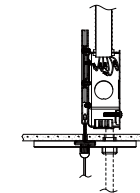
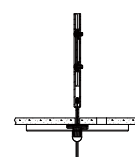
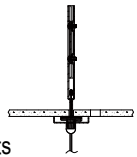
### SDS Drywall Suspension Kits



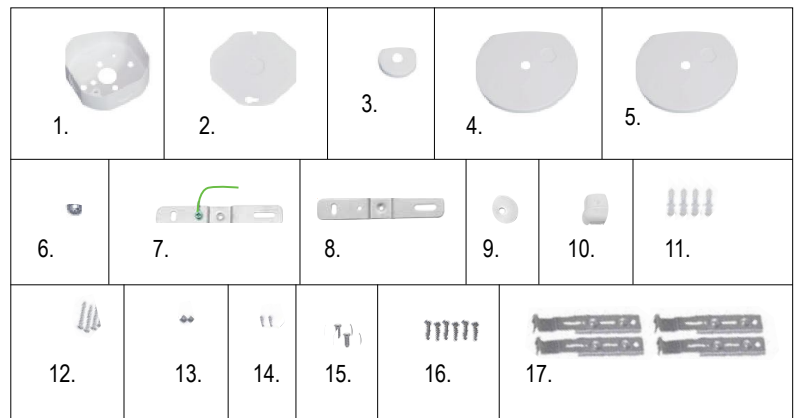
1. 5" Slim Canopy (Non-Power feed)
2. 5" Slim Canopy (Power feed)
3. 1.7" Slim Canopy
4. Screw PM4\*70
5. Lock Washer
6. Screw PA4\*30
7. Plastic Anchor
8. Butterfly Anchor
9. Flat Washer
10. Screw PM4\*10
11. Screw 8#-32\*1-3/4
12. Wire buckle
13. U Bracket with Ground
14. U Bracket



### SCS Drop Ceiling Suspension Kits



1. 4" J-box
2. 4" J-box Plate
3. 1.7" Slim Canopy
4. 5" Slim Canopy (Non-Power feed)
5. 5" Slim Canopy (Power feed)
6. Lock Washer
7. U Bracket with Ground
8. U Bracket
9. Plastic Grommet
10. Wire buckle
11. Plastic Anchor
12. Screw BA4\*30
13. Screw PB4\*5
14. Screw PM4\*10
15. Screw PM4\*8
16. Screw 8-32\*1-3/4
17. T-Grid Clips



# PHOTOMETRICS

Lens	Lumen output
PC Diffuser	1380lm/ft, 12.5W/ft

Above are subject to 3000K, white housing . All efficacy is  $\pm 5\%$  base on different CCT and lighting distributions.  
For other CCT, housing color etc. please check the IES file to gain the accurate data

## Zonal Flux Diagram

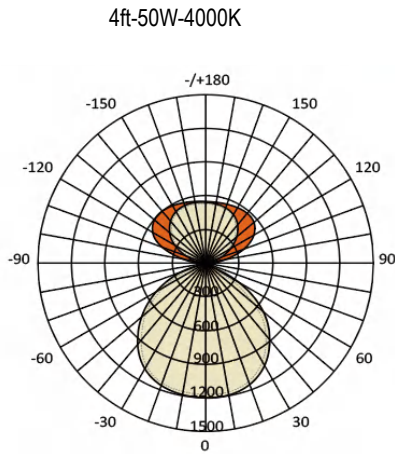
Y	C0	C45	C90	C135	C180
10	1200	1184	1161	1143	1143
20	1171	1147	1103	1068	1059
30	1107	1076	1013	958.5	937.3
40	1008	972.7	888.9	817.3	797.3
50	880.0	838.0	732.2	656.0	646.4
60	731.9	678.0	545.2	481.4	460.8
70	553.4	502.2	329.7	264.7	212.5
80	330.1	285.8	108.4	24.26	5.588
90	78.45	29.66	16.29	13.03	3.677
DEG	LUMINOUS INTENSITY:cd				

## Zonal Lumens

Y	$\Phi$ Zone	$\Phi$ Total
0-10	112.4	112.4
10-20	323.6	436.0
20-30	495.8	931.8
30-40	608.1	1540
40-50	648.7	2189
50-60	611.3	2800
60-70	493.5	3294
70-80	299.5	3593
80-90	112.9	3706

## Zonal Lumens

G(DEG)	C0/180	C90/270
85	23555	3663
80	19012	6240
75	17590	8304
70	16179	9639
65	15412	10457
60	14638	10904
55	14091	11194
50	13690	11391
45	13390	11516



Average Beam Angle (50%) : 119.8°

Lumen/ft:1357.46lm/ft

Total Lumens: 5429.85 lm(for 4ft)

Input Watts: 120W

Efficacy: 105.84lm/W